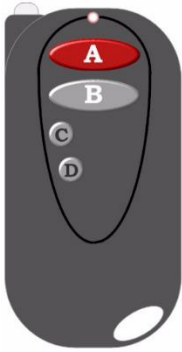




Tech Support
856-768-5700 EXT 2
TechSupport@LEDGlow.com

Wireless Remote Reprogramming for Interior Lighting Kits

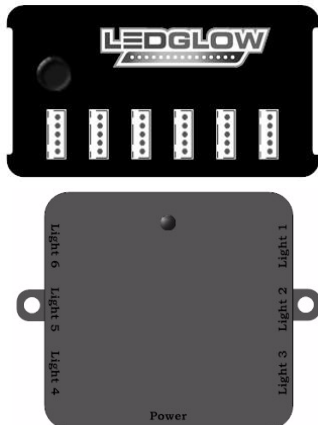


This style of remote is compatible with several different control boxes. Instructions on pairing this remote your specific control box can be found below.



Single & Million Color Expandable Interior Controller

With 12V power connected to the control box and the control box powered off, press and hold the “B” button on the remote and the mode button on your control box simultaneously for 7 seconds. If your control box has “ABCD” buttons, press and hold the “B” button instead of the mode button. After, test the operation of your kit with the remote.



Flexible Million Color Interior Controller

With 12V power connected to the control box and the control box powered off, press and hold the button on the control box as well as the “B” button on the remote simultaneously for 7 seconds. After, test the operation of your kit with the remote.

LEDGlow warrants to the original retail customer purchaser, and not to any other purchaser or subsequent owner that the product will be free from defects in material or workmanship for one (1) year from the purchase date. This warranty does not cover any product that is (1) installed incorrectly, (2) damaged by collisions, vandalism, or other accidents, or (3) improperly or incorrectly used or damaged by similar causes. Purchaser’s sole and exclusive remedy for damages against LEDGlow shall not be greater than the actual purchase price of the product for which the claim is made. TERMS AND CONDITIONS CAN BE VIEWED IN FULL AT <https://www.ledunderbody.com/limited-warranty/>